

## **Basic Tech Spec**

(please note that this is a working progress and speaking with the Venue direct is always recommended)

### **1. Bapsy Hall – General In house**



a) Audio

### **Auditorium;**

Array speakers x 2 (Martin Omniline) fixed, hanging from ceiling  
Sub x 2 (Martin Twin 15") fixed, ground level either side of stage under stairwell, behind vent

### **Stage (in floor);**

3 x XLR inputs stage left  
3 x XLR inputs central stage  
3 x XLR inputs stage right

### **Control room -located on balcony stage right as circled below**

(Appreciate this is often not suitable. FOH is created either on main floor or front of balcony)



### **b) Control Room equipment**

Sound desk – (Allen & Heath GL2400 x 16 channel)

All rack mounted in control room;

- Microphone receivers x 4 – EM100 G3 for 2 x SKM300 handhelds and 2 x SK300 tie clip's
- Single CD Player – (Denon DNC635)
- Audio Processor (DBX Driverack 250)
- Amp #1 (Crown Macrotech 1200)
- Amp #2 (QSC RMX 4050HD)
- Amp #3 (QSC RMX 2450)
- 8 zone mixer (Cloud Z8)
- Induction Loop (Ampertonic ILD1000G)
- Power Distro system (Emo)

2 x Bose monitors either side of sound desk.

## c) Lighting

### **Auditorium Lighting**

Right hand bar

- 7 x LED J lights
- 3 x ETC Source 4 Junior Zoom stage lighting

Left hand bar

- 7 x LED J lights
- 3 x ETC Source 4 Junior Zoom stage lighting

Stage front bar

- 6 x Selicon Fresnels on a lighting bar which is 1.7m in height from Stage floor
- 5 x LED J lights

Stage rear bar

- Empty but cabled as per diagram

### **Stage**

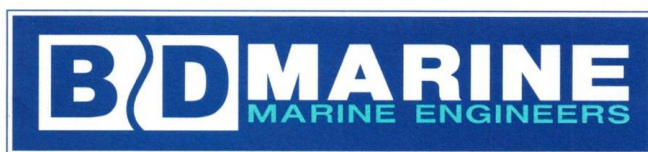
- Zero88 Chilli Pro 24-10i Bypass 24 channel wall mount dimmer unit. Each channel can be set for dimming or bypass to enable connection of LED and moving lights.

### **Control room (located on balcony stage right)**

- Lighting desk (Zero88 Leap Frog 48) – computer enabled touch screen located in control room



## d) Stage truss loading



Lifting Gear Design, Manufacture & Sales · Lloyds Register Approved Test House

Registered Office:  
BDM House, Crosshouse Road  
Southampton, SO14 5GZ, United Kingdom  
Tel: +44 (0)23 8022 0294  
Fax: +44 (0)23 8023 8530  
Email: enquiries@bdmarine.co.uk  
www.bdmarine.co.uk

### Certificate of Test and Thorough Examination

Customer Name:	Certificate No.	2191
Expression Events Unit 2 Lanford Express Common Farm Lanford SP5 2AZ	Customer Order No.	VBL
	Date:	16/05/2016
	Job No.	CH007516

Identification Marks	Description	No Tested	Date of Test	Proof Load	Max Working Load
	<b>** Located on stage in the Bapsy Hall @ Winchester Guildhall**</b>	0	16/05/2016		
2MT	<b>** Load always to be spread evenly**</b> lighting bar c/w 2No hanging / lifting points (Middle of stage)	1	16/05/2016	390kg per point	300kg per point
1FT	Lighting bar c/w 4No lighting sections (Front of stage)	1	16/05/2016	390kg per end	150kg per section
3BT	Lighting bar c/w 4No lighting sections (rear of stage)	1	16/05/2016	390 per end	150kg per section

The equipment above as been Thoroughly examined and has been found free from defects and is fit for use.  
Under the LOLER 1998 regulations this equipment should be Thoroughly examined in 12 months.

Name of Vessel:	N/A	Call Sign:	N/A
Official Number:	N/A	Port of Registry:	N/A

Examiner:	D Walsh
-----------	---------



CERT No: MD00/4104/0002/8

## e) Projections

- Stage projector screen (Harkness) Screen Dimensions 4m x 1.8m
- Rear projection (Christie LW650) controlled via VGA on stage and/or in control room via VGA or HDMI
- Mobile projectors and screens available on request

## f) Power

### **Stage floor**

2 x 13amp Stage left  
2 x 13amp centre stage  
2 x 13amp Stage right

### **Side of stage**

16 x 13amp sockets  
2 x 16amp Stage left  
1 x 3 Phase Stage left

### **Control room**

8 x 13amp sockets  
2 x 32amp sockets

## g) Internet

- Free wifi throughout. Connections of up to 200 devices. BT supplied Infinity Fibre up to 76Mb download with 50:1 contention rates and likely to get as high as 45Mb download or a little as 15Mb download subject to local usage and connected devices within the building.
- Internet delivered DHCP directly from Gateway Router
- Private wifi connection available, which runs through same server but pushes ahead of general wifi. Password available from Venue.
- Possible cable connections via ports x 1 in control room and x 2 front of house.
- There are restrictions on some website access so please speak to venue.

## h) Staffing

- 1 x In House Sound
- 1 x In House Lights
- 1 x runner
- 1 x Monitors (if required as part of band spec)

## **2. Bapsy Hall - Hired system when required** **(Hired from Expression Events)**

### **a) Audio**

1 x Yamaha LS9-32  
1 x Arcs Amp Rack  
12 x B&C 18" Sub  
6 x L-acoustic Arcs  
8 x L-acoustic Arcs Rigging bar  
6 x CVA Max15  
6 x Short Boom Stand  
9 x Tall Boom Stand  
4 x DMX Splitter Buffer  
2 x LAB FP-10000q  
SM58 Microphones  
1 x XLR Multicore w/Tails+Box 32+16 75M

### **b) Lighting**

6 x Chauvet Q-Wash 360Z LED  
4 x LEDj colourblast  
1 x Look Solutions Unique 2.1 Hazer  
8 x Showtec Sunstrip active mk2  
1 x Chamsys MQ100  
As well as in-house rig

# Bapsy Hall- Winchester Guildhall

Key

Square Meter

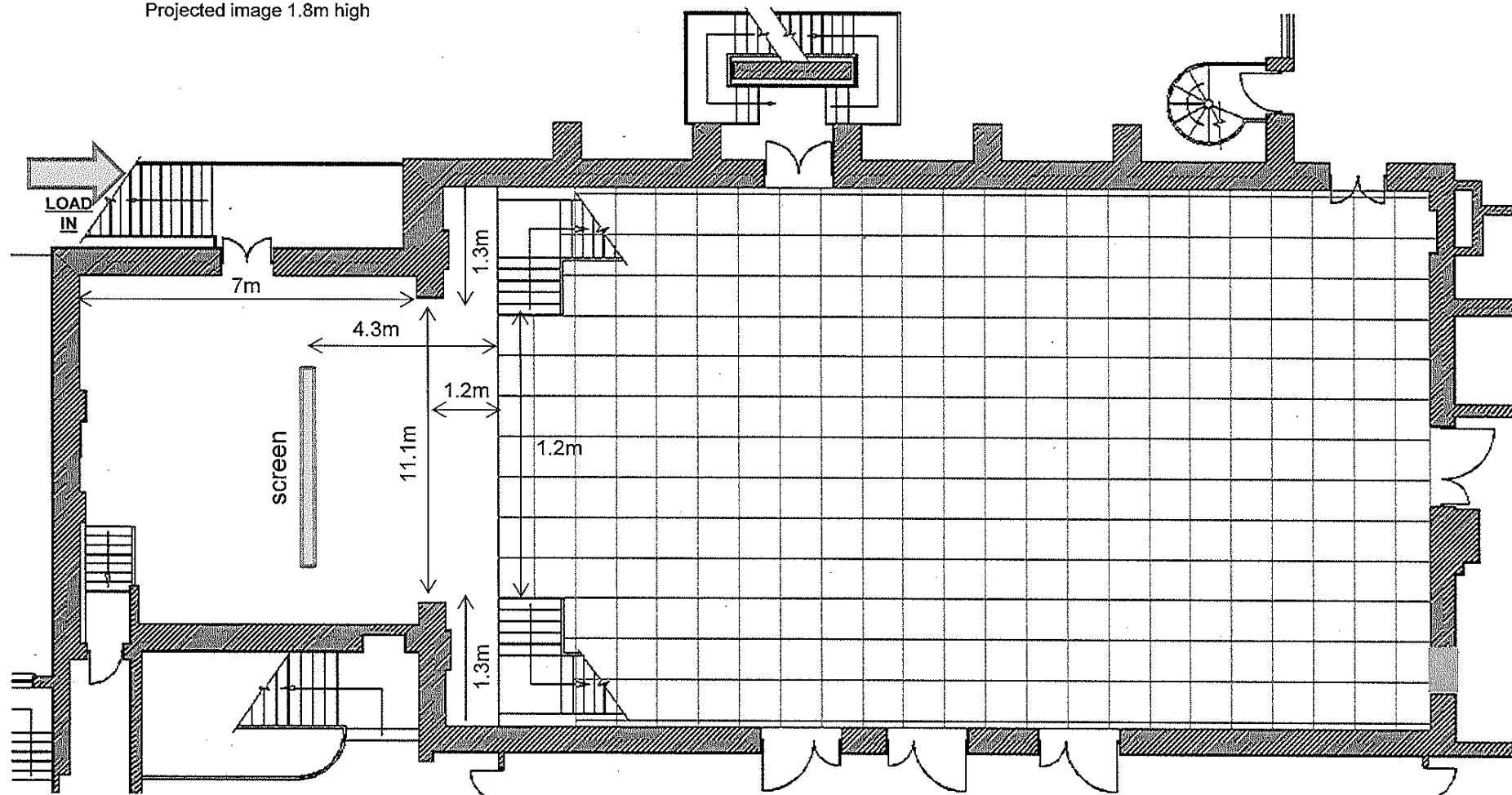


## STAGE

Other notes;  
Stage height from floor; 1.2m  
Screen Width 4.4 m  
Projected image 1.8m high

## Room Dimensions

Width - 13m  
Length - 23m



### 3. General Information

Guildhall,  
Broadway,  
Winchester  
Hampshire  
SO23 9GH  
01962 840820



By Road North & Midlands - M1, M42, M40, A34

London and South East - M25/M27, M3

South West - A303/M4, A34

By Rail

London Waterloo (1 hour), Southampton Airport Parkway (15 minutes) and Bournemouth (45 minutes).

Winchester Station is approximately a 15 minute walk or 5 minute taxi ride.

By Air

Southampton International, Bournemouth International, Heathrow and Gatwick Airports all have excellent rail and coach links to Winchester.

## a) Parking & Load In/Out

Guildhall Yard  
Colebrook Street  
SO23 9GH

With the Guildhall on your left, turn left in Colebrook Street, and turn left again into the Guildhall Yard. The carpark is accessed under an arch which has a height restriction of **3.8m at its lowest**.

Our parking bays are labelled **GH1-GH6**.

Please confirm with the Venue which bays you will have. Splinter vans may require two spaces.

If the spaces have bollards in place, please call **01962 840820 and Option 1**, or visit our main reception on the ground floor front entrance.

There is no requirement for vehicle passes on site. Vehicles must be clear of the spaces by **7am the following morning**, unless an extension is confirmed with the Venue.

The Bapsy Hall is on **Level 1 of the Guildhall**.

Access direct to the stage is via steps leading from the carpark-bays.

Direct access to the Bapsy Hall floor is via three options;

1. External staircase leading to room from car park
2. Internal staircase leading to room from car park
3. Internal passenger lift from Ground level to Level 1

Please note that when using internal routes, the building is open to the public and subsequently has high footfall in its corridors.

**Please also note that the internal lift is for customers and has weight restrictions**

You will be pleased to know that an external goods lift is being installed from car park to Stage in due course. Just not yet – Sorry!

## b) Curfew's

Please ensure you speak with the Venue Manager on site to confirm times for making noise. We have other rooms being used for meetings, however we do plan for gigs and so **usually work to having sound from 2pm onwards**.

The curfew for live music is **11pm**.

When loading out, please respect our residents who live opposite the car park. They are lovely and understand, however we want to keep the good relationship we with them.

During the show, please ensure the stage door from external staircase is full closed. Thank you

### **c) Facilities**

- 1 x Green room suitable for up to 12-15 people with;
- 1 x WC and Shower room
- Iron and board
- Fridges
- Sink

### **d) Accommodation**

We have a discount with the Mercure Wessex hotel next door. <http://www.mercure.com/gb/hotel-6619-mercure-winchester-wessex-hotel/index.shtml>

Please speak with us about booking or when you book quote our name. There is parking on site.

### **e) Catering**

We have a café on site open from 8am-5pm. All our artists and crew receive 10% off food and drink. Please show your production pass.

Catering can be booked in advance. We have a great Chef and a menu will be produced with this spec. Please ensure orders are placed before show day.

The Guildhall is on Winchester High Street and our city is full of exceptional restaurants. From high street brands to local independents. All within walking distance.

Our recommendations are;

Rick Stein – High Street

River Cottage – Abbey Gardens

Palm Pan Asia – High Street, opposite Guildhall

The Old Vine – Old Minster Street

The Black Boy – Wharf Hill

### **f) Etiquette**

Please respect that we are a public building with various other bookings and meetings taking place. We ask that you politely respect our beautiful historic building, built in 1871. The building is used for a range of events and functions including many civic and mayoral events.

If you have any other questions please contact us on;

[Guildhall@winchester.gov.uk](mailto:Guildhall@winchester.gov.uk) – General enquires

[fegerton@winchester.gov.uk](mailto:fegerton@winchester.gov.uk) – General manager

